

**LEGEND**

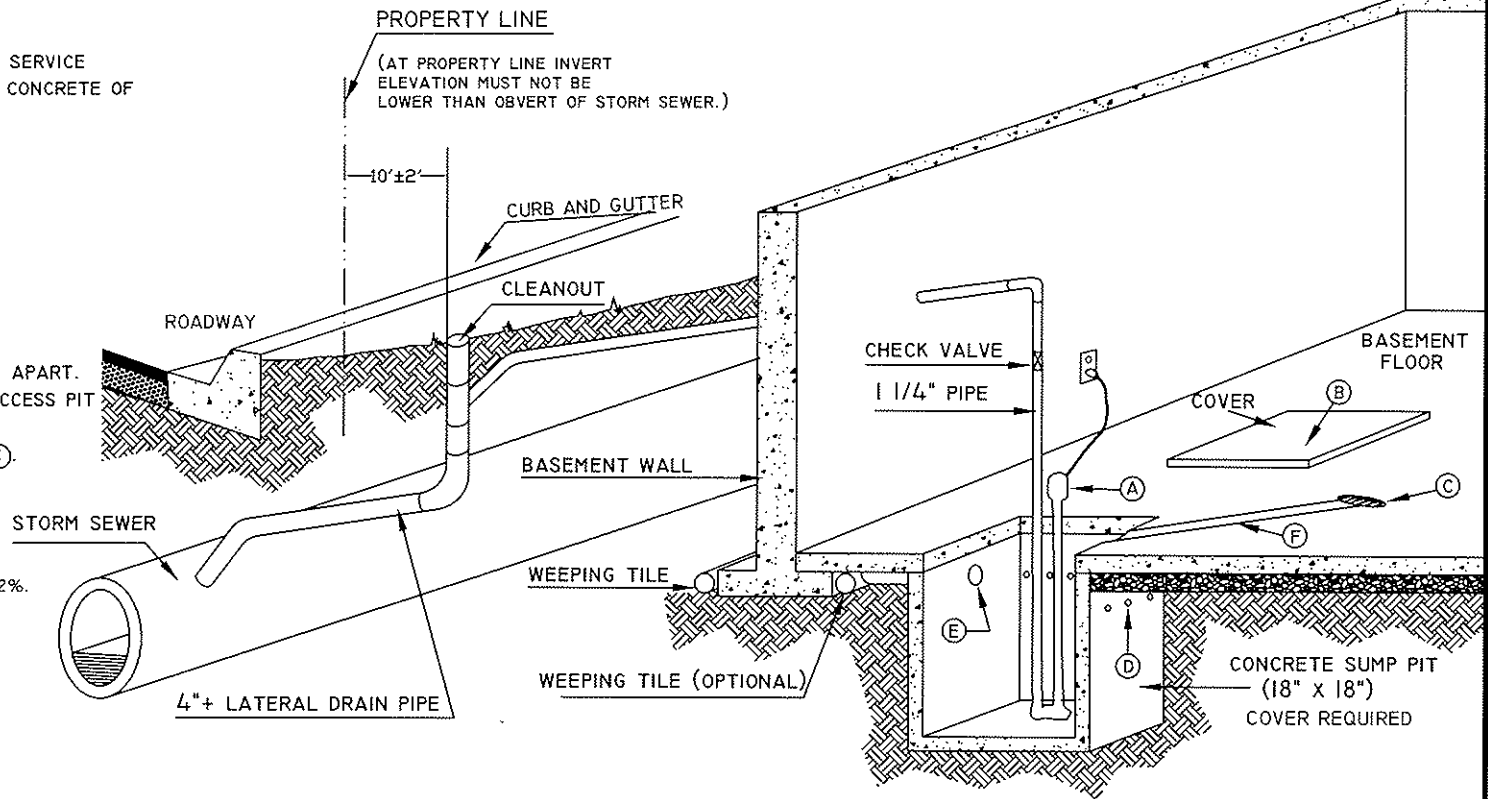
- (A) AUTOMATIC ELECTRIC SUMP PUMP
- (B) SANITARY SEWER ACCESS PIT (18" x 18") TO SERVICE BACK WATER VALVE. NO HOLES ALLOWED IN CONCRETE OF PIT. COVER REQUIRED.
- (C) FLOOR DRAIN TO SANITARY SEWER
- (D) WEEP HOLES TO DRAIN GRANULAR BASE
- (E) WEEPING TILE
- (F) 1/2" SHALLOW TROUGH TO FLOOR DRAIN

**GENERAL NOTES:**

1. SUMP PIT AND SANITARY ACCESS PIT MIN. 2' APART.
2. FLOOR DRAIN SET MIN. 2' FROM SANITARY ACCESS PIT AND SUMP PIT.
3. BASEMENT FLOOR GRADED TO FLOOR DRAIN (C).
4. STORM LATERAL TO BE COLOUR CODED TO DIFFERENTIATE FROM SANITARY LATERAL.
5. ALL PIPING INSIDE BUILDING SHALL CONFORM TO THE ONTARIO PLUMBING CODE.
6. LATERAL PIPE TO BE LAID AT MINIMUM FALL OF 2%.

**CAUTION**

STORM SEWER MAINS ARE SUSCEPTIBLE TO SURCHARGING AND MAY BACK UP IF STORMS OF A HIGH INTENSITY OCCUR OR DUE TO A DOWN STREAM BLOCKAGE. THIS SHOULD BE CONSIDERED WHEN CONNECTING THE WEEPING TILES TO THE STORM SEWER. THE ELEVATION OF THE STORM SEWER MAY REQUIRE A MODIFICATION TO THE METHOD OF CONNECTION SHOWN HERE.



**SCHEDULE "A"**

ELECTRIC SUMP PUMP  
INSTALLATION WITH WEEPING  
TILE DRAIN TO CLASS "A" ROAD  
N.T.S.

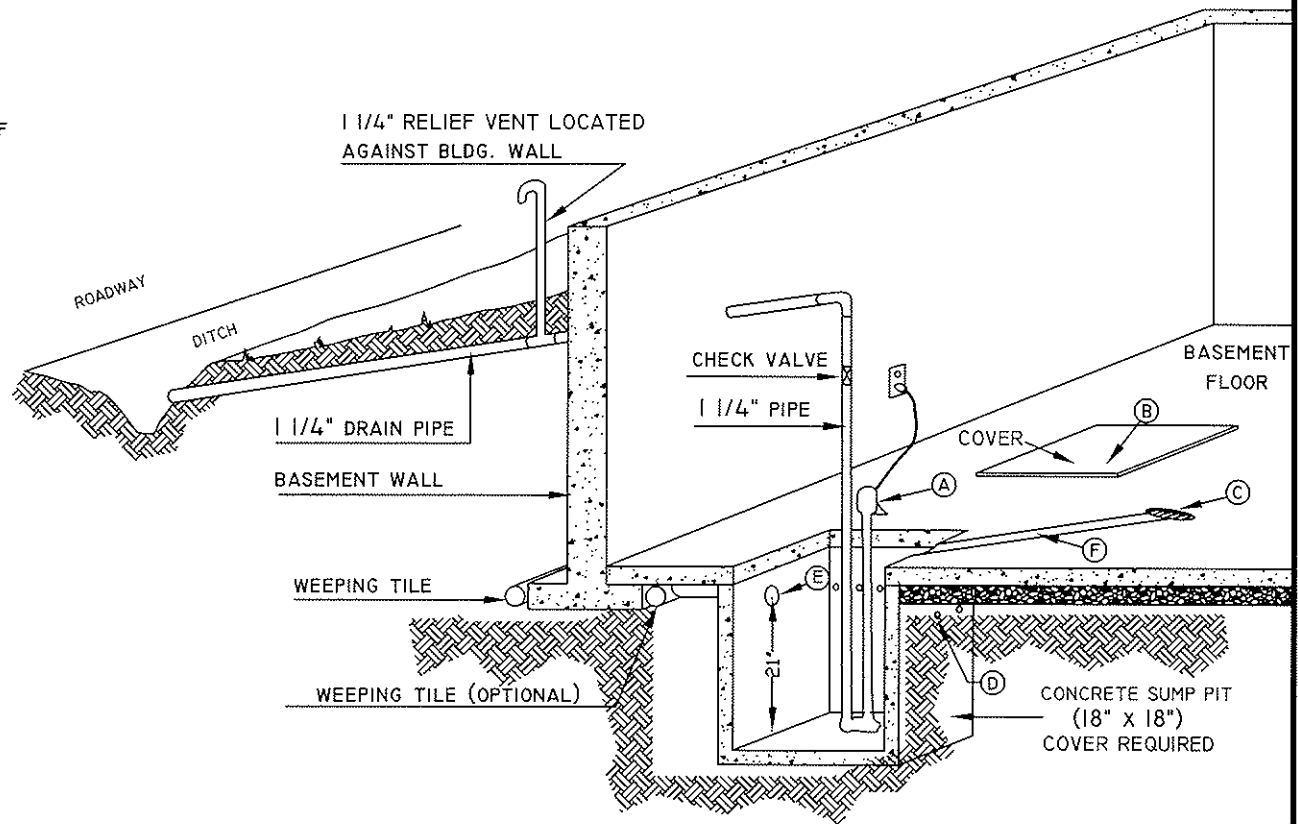


LEGEND

- (A) AUTOMATIC ELECTRIC SUMP PUMP
- (B) SANITARY SEWER ACCESS PIT (18" X 18"), TO SERVICE BACK WATER VALVE, NO HOLES ALLOWED IN CONCRETE OF PIT. COVER REQUIRED.
- (C) FLOOR DRAIN TO SANITARY SEWER
- (D) WEEP HOLES TO DRAIN GRANULAR BASE
- (E) WEEPING TILE
- (F) 1 1/2" SHALLOW TROUGH TO FLOOR DRAIN

GENERAL NOTES:

1. SUMP PIT AND SANITARY ACCESS PIT MIN. 2' APART.
2. FLOOR DRAIN SET MIN. 2" FROM SAN. ACCESS PIT AND SUMP PIT.
3. BASEMENT FLOOR GRADED TO FLOOR DRAIN (C)
4. ALL PIPING INSIDE BUILDING SHALL CONFORM TO THE ONTARIO PLUMBING CODE.



**SCHEDULE "B"**



**ELECTRIC SUMP PUMP  
INSTALLATION WITH WEEPING  
TILE DRAIN TO CLASS "B" ROAD  
N.T.S.**

**LEGEND**

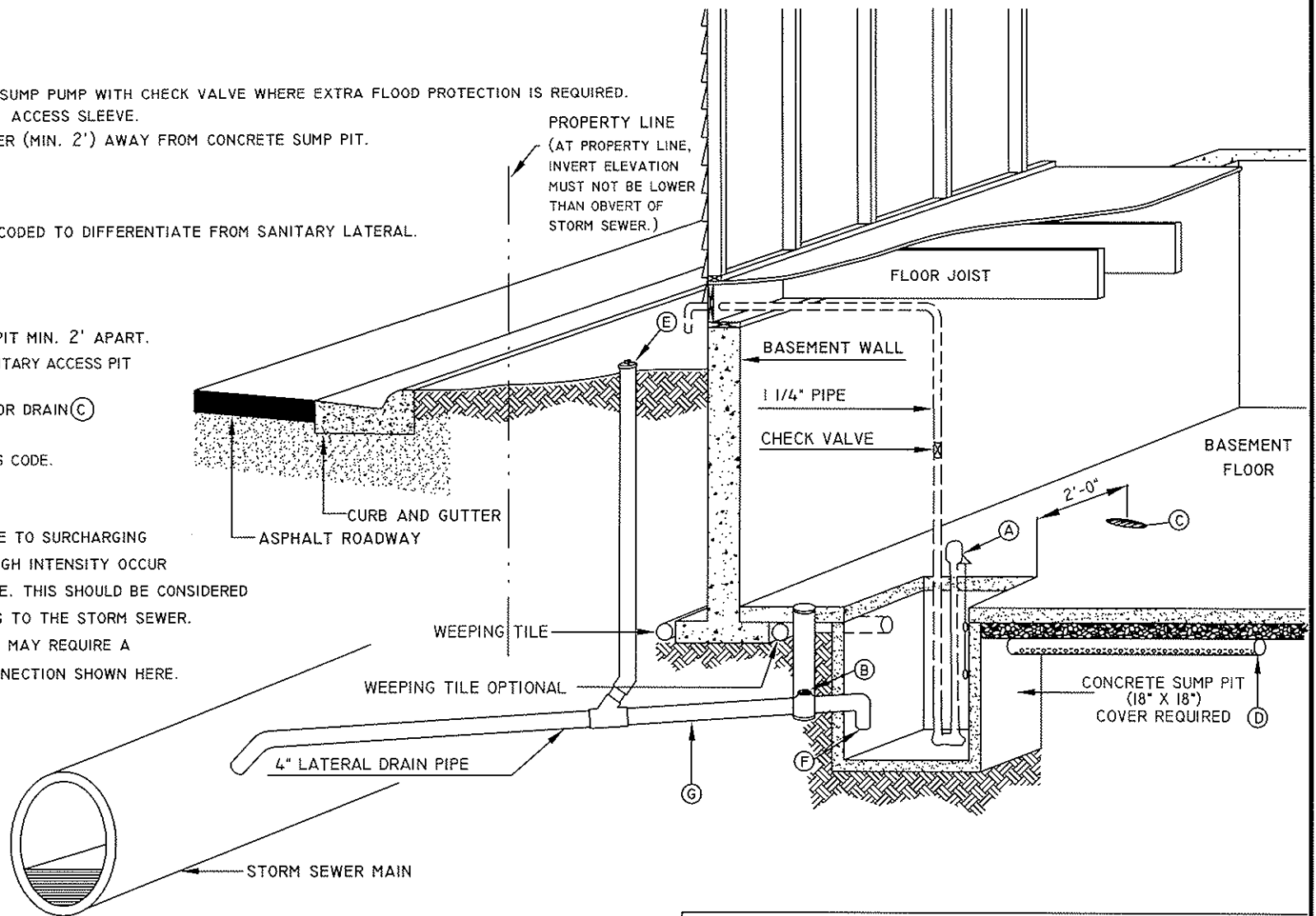
- (A) OPTIONAL AUTOMATIC ELECTRIC SUMP PUMP WITH CHECK VALVE WHERE EXTRA FLOOD PROTECTION IS REQUIRED.
- (B) BACKWATER VALVE WITH 8" DIA. ACCESS SLEEVE.
- (C) FLOOR DRAIN TO SANITARY SEWER (MIN. 2') AWAY FROM CONCRETE SUMP PIT.
- (D) WEEPING TILE
- (E) 4" CLEAN-OUT
- (F) TRAP SEAL (MIN. 6")
- (G) STORM LATERAL TO BE COLOUR CODED TO DIFFERENTIATE FROM SANITARY LATERAL.

**GENERAL NOTES:**

1. SUMP PIT AND SANITARY ACCESS PIT MIN. 2' APART.
2. FLOOR DRAIN SET MIN. 2' FROM SANITARY ACCESS PIT AND SUMP PIT.
3. BASEMENT FLOOR GRADED TO FLOOR DRAIN (C)
4. ALL PIPING INSIDE BUILDING SHALL CONFORM TO THE ONTARIO PLUMBING CODE.

**CAUTION**

STORM SEWER MAINS ARE SUSCEPTIBLE TO SURCHARGING AND MAY BACK UP IF STORMS OF A HIGH INTENSITY OCCUR OR DUE TO A DOWN STREAM BLOCKAGE. THIS SHOULD BE CONSIDERED WHEN CONNECTING THE WEEPING TILES TO THE STORM SEWER. THE ELEVATION OF THE STORM SEWER MAY REQUIRE A MODIFICATION TO THE METHOD OF CONNECTION SHOWN HERE.



**SCHEDULE "C"**

GRAVITY FLOW DRAIN OF  
WEEPING TILE TO  
CLASS "A" ROAD  
N.T.S.



**LEGEND**

- (A) AUTOMATIC ELECTRIC SUMP PUMP
- (B) SANITARY SEWER ACCESS PIT (18" X 18"), TO SERVICE BACK WATER VALVE, NO HOLES ALLOWED IN CONCRETE OF PIT. COVER REQUIRED.
- (C) FLOOR DRAIN TO SANITARY SEWER
- (D) WEEP HOLES TO DRAIN GRANULAR BASE
- (E) WEEPING TILE
- (F) 1 1/2" SHALLOW TROUGH TO FLOOR DRAIN

**GENERAL NOTES:**

1. SUMP PIT AND SANITARY ACCESS PIT MIN. 2' APART.
2. FLOOR DRAIN SET MIN. 2' FROM SANITARY ACCESS PIT AND SUMP PIT.
3. BASEMENT FLOOR GRADED TO FLOOR DRAIN (C)
4. ALL PIPING INSIDE BUILDING SHALL CONFORM TO THE ONTARIO PLUMBING CODE.

EAVETROUGH  
DOWNSPOUT

SLOPE 3/4" PER FOOT (6%)

SPLASH PAD

FLOOR JOIST

BASEMENT WALL

CHECK VALVE

1 1/4" PIPE

BASEMENT  
FLOOR

COVER

WEEPING TILE

(A)

(B)

(C)

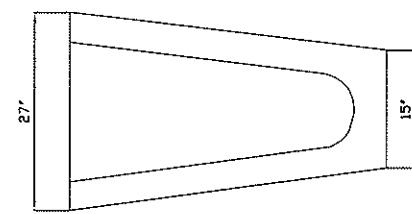
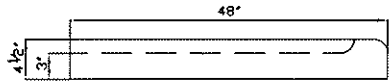
(E)

(F)

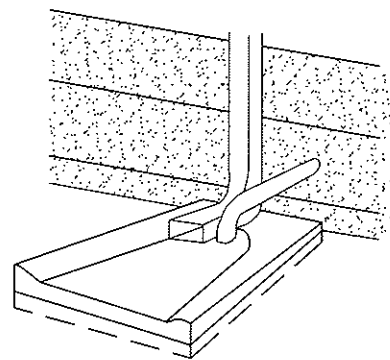
WEEPING TILE (OPTIONAL)

21"

CONCRETE SUMP PIT  
(18" X 18")  
COVER REQUIRED



PRECAST CONCRETE SPLASH PAD  
DETAILS



ISOMETRIC

**SCHEDULE "D"**

ELECTRIC SUMP PUMP  
INSTALLATION WITH WEEPING  
TILE DRAIN ONTO SPLASH PAD  
N.T.S.



**LEGEND**

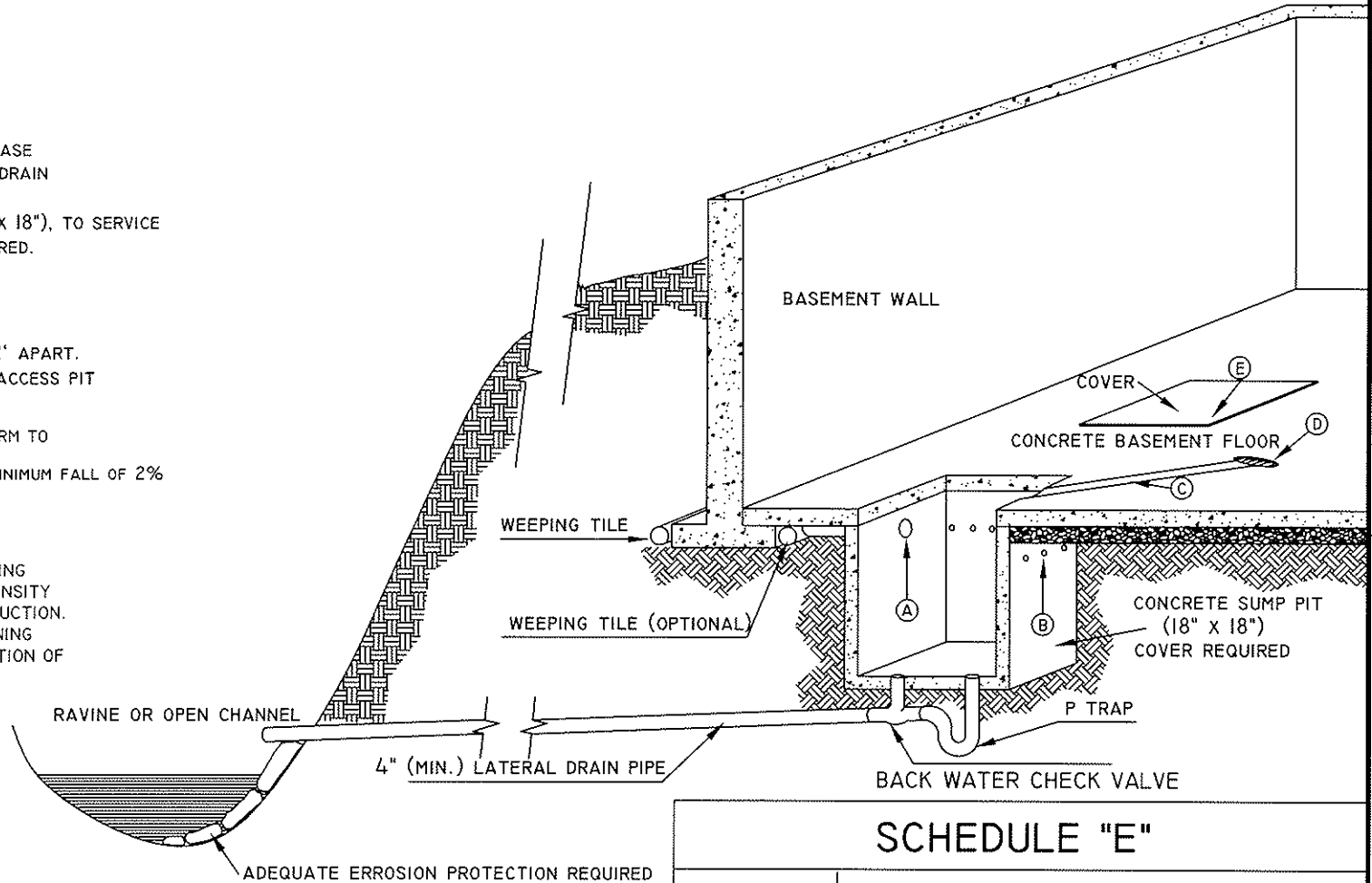
- (A) WEeping TILE
- (B) WEEP HOLES TO DRAIN GRANULAR BASE
- (C) 1/2" SHALLOW TROUGH TO FLOOR DRAIN
- (D) FLOOR DRAIN TO SANITARY SEWER
- (E) SANITARY SEWER ACCESS PIT (18" X 18"), TO SERVICE BACK WATER VALVE - COVER REQUIRED.

**GENERAL NOTES:**

1. SUMP PIT AND SAN. ACCESS PIT MIN. 2' APART.
2. FLOOR DRAIN SET MIN. 2' FROM SAN. ACCESS PIT AND SUMP PIT.
3. ALL PIPING INSIDE BUILDING SHALL CONFORM TO THE ONTARIO PLUMBING CODE.
4. LATERAL DRAIN PIPE TO BE LAID AT A MINIMUM FALL OF 2%

**LEGEND**

RAVINES ARE SUSCEPTIBLE TO SURCHARGING AND MAY RISE IF STORMS OF A HIGH INTENSITY OCCUR OR DUE TO A DOWNSTREAM OBSTRUCTION. THIS SHOULD BE CONSIDERED WHEN DRAINING WEeping TILES TO A RAVINE. THE ELEVATION OF THE OUTLET SHOULD CONSIDER THIS.



**SCHEDULE "E"**

GRAVITY FLOW DRAIN WITH WEeping TILE DRAIN TO RAVINE OR OPEN CHANNEL  
N.T.S.

