

GORE STREET STREETScape DESIGN PUBLIC OPEN HOUSE



Transform Gore!



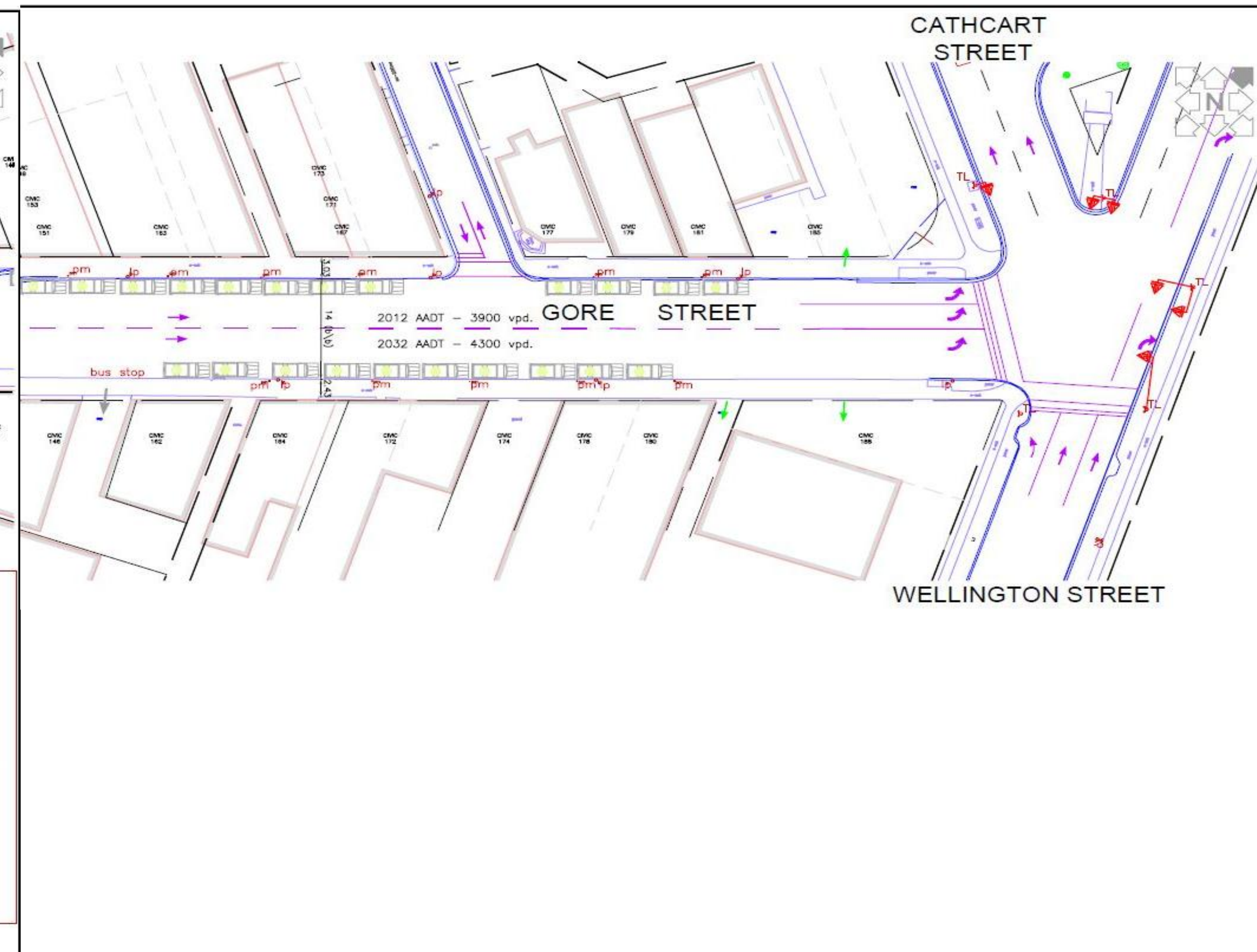
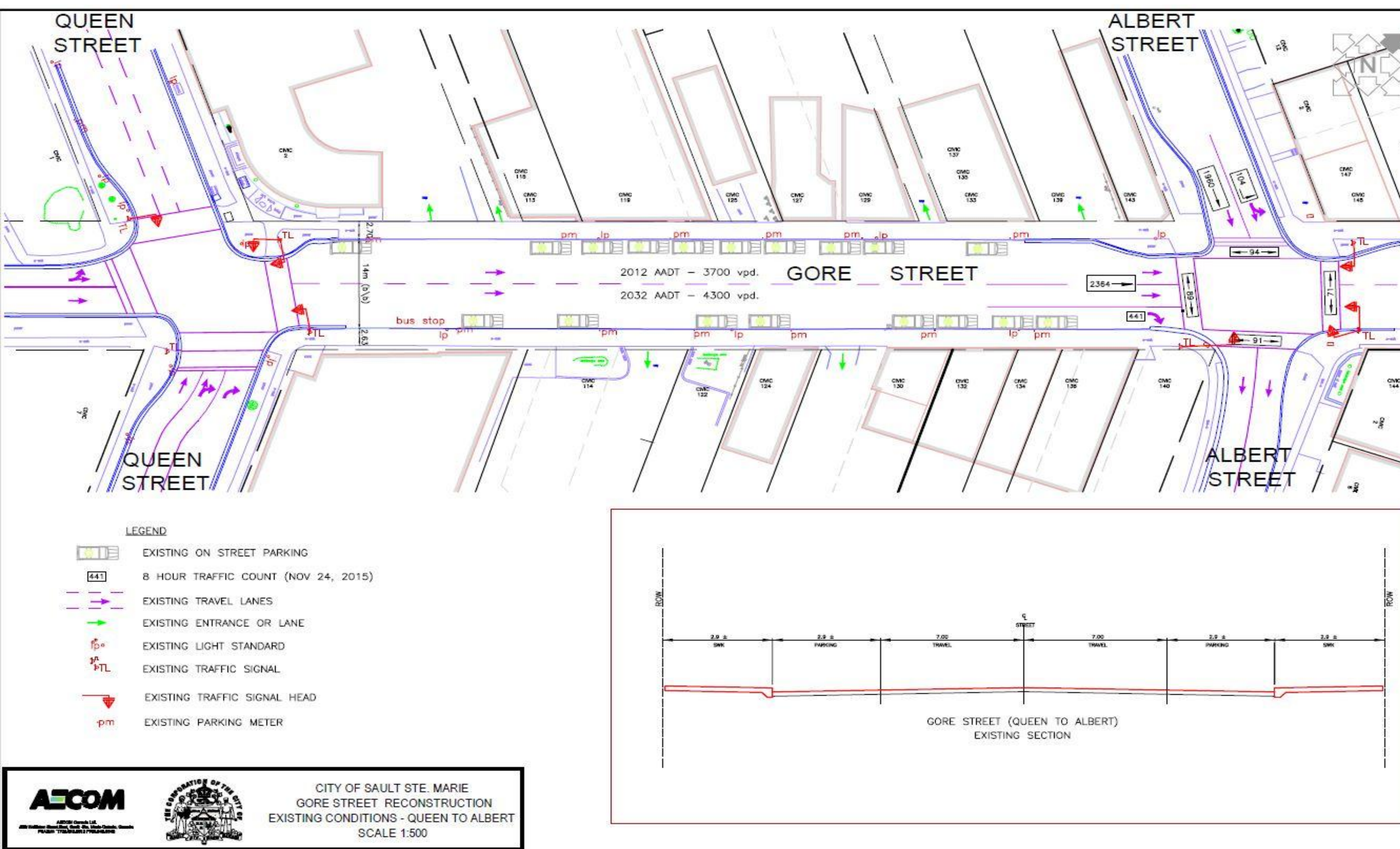
Welcome! Please sign in on the sheet below.

The purpose of this open house is to provide information about the Gore Street road reconstruction project, obtain input on the proposed streetscape concept plan, and discuss design elements.

Please fill out our survey at a computer station.

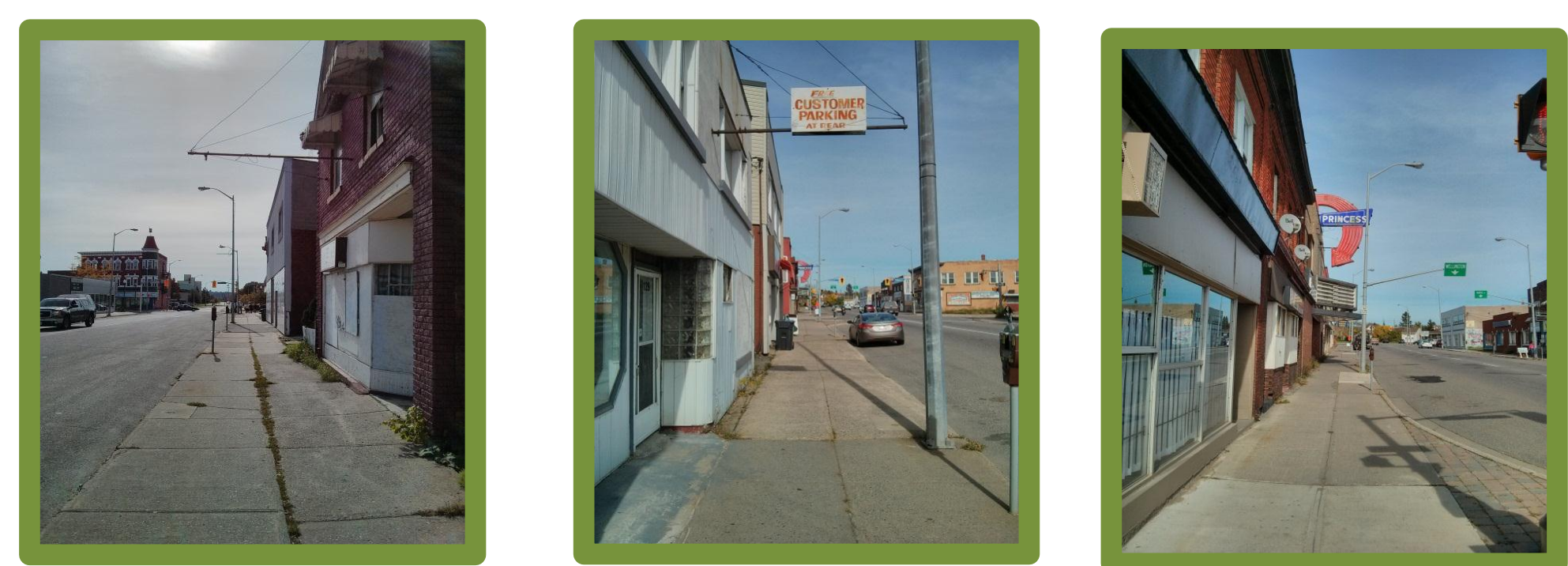


EXISTING CONDITIONS

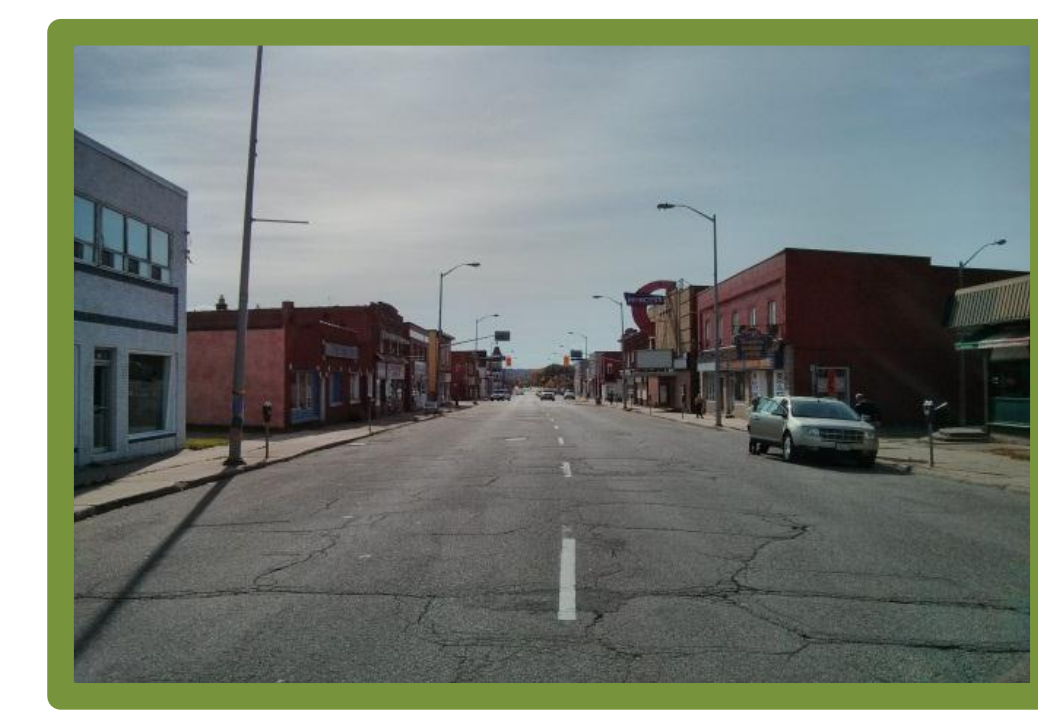


AECOM CITY OF SAULT STE. MARIE
 GORE STREET RECONSTRUCTION
 EXISTING CONDITIONS - QUEEN TO ALBERT
 SCALE 1:500

Narrow concrete sidewalks



Wide roadway



Underutilized space



Intimidating intersection





DESIGN PRINCIPLES



Context sensitive

Gore Street's design should build on its historic function as a 'main street' and accommodate the needs and priorities of neighbourhood residents and business owners.

Pedestrian focused

When focus is placed on the pedestrian experience, Gore Street becomes a more attractive destination for people to visit as pedestrians feel more comfortable in the space.

Flexible

Gore Street should accommodate multiple uses and activities year-round, and infrastructure should be versatile and respond to the needs and priorities of residents and business owners.

Traffic Calming

Over the past decades, Gore Street has become less of a traditional 'main street' and more of a traffic thoroughfare. Incorporating traffic calming methods can help to reinstate Gore Street as a destination rather than a street to pass through and help increase pedestrian safety.



STREETSCAPE ELEMENTS



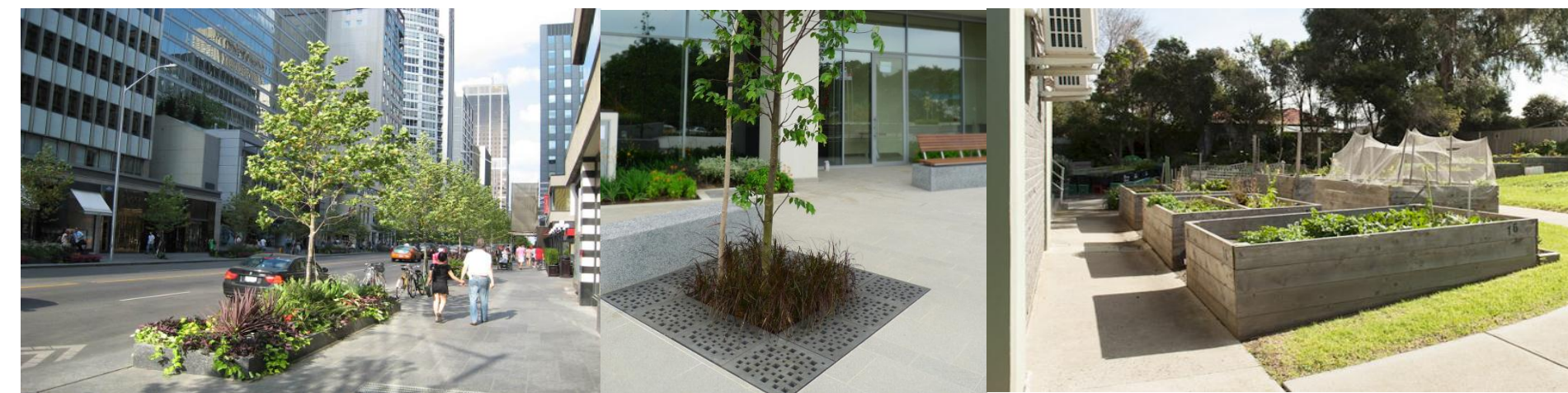
Street Layout

Street layout influences the uses, activities, and traffic patterns on the street. wider sidewalks can help slow down traffic and encourage pedestrian activity. Curb extensions framing on-street parking can also help to slow down traffic as well as provide more space on the sidewalk to plant trees and develop gathering spaces. On-street parking provides access to businesses and services on the street. It also serves as flexible space providing the opportunity for activities such as sidewalk cafes. Paved areas helps to slow down traffic.



Plantings

Planting and landscaping in the form of trees, shrubs, perennials, grasses, and other ground coverings enhances streetscape aesthetics as softer, dynamic components that contribute to the character of downtown streets. Street trees provide refuge from the elements and shade in summer months. Planting helps to define space on the streetscape, acting as a buffer between vehicles and pedestrian realms.



Street Furniture

Street furniture includes benches and other seating opportunities, garbage and recycling receptacles, and bicycle racks. These elements help to make the street more comfortable and welcoming for pedestrians and encourage people to gather. Coordinated street furniture helps to develop a strong identity and character for the street.



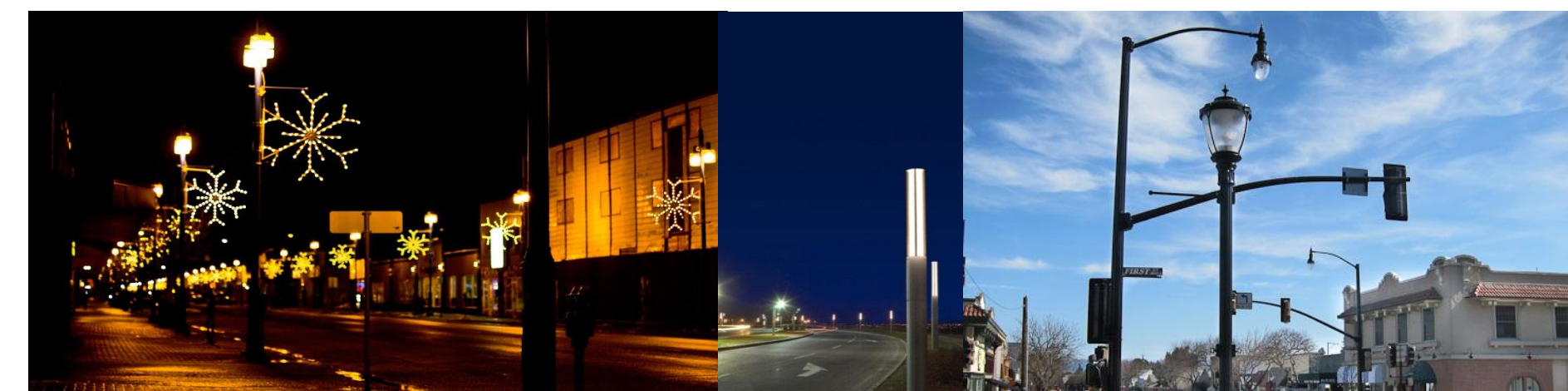
Intersections

Maximizing pedestrian safety is a fundamental concern of intersection design. Intersections can be designed to slow down traffic and make drivers more aware using many mechanisms including narrowing the road at the intersection, slightly elevating the asphalt in the intersection, or incorporating special paving.



Lighting

A well-lit street is one that pedestrians feel safe and encouraged to visit beyond daylight hours. Lighting helps to increase people's sense of safety. It also contributes to developing a welcoming 'main street' atmosphere. Special lighting can be incorporated seasonally.



Placemaking

The streetscape revitalization presents many opportunities for activating Gore Street. A more pedestrian-friendly design can better support closing the street to festivals, and an enhanced pedestrian realm can encourage dynamic uses such as sidewalk cafes.





Transform Gore!

WHAT DO YOU THINK?



On the plan below, feel free to identify opportunities and constraints of the proposed streetscape plan.

